



SCOCRE15

Designed for 2015 and newer Chevrolet® Colorado and GMC® Canyon Crew Cab vehicles



Power Harness Routing

1. Disconnect negative battery cable.
2. Make sure supplied fuse is not installed in fuse holder and connect the subwoofer power wire to the stud pictured in figure 1. Tighten to 4.7Nm (42in-lb)
3. Route the power harness toward the firewall and secure with supplied wire ties.
4. Make a small incision in the grommet on the driver side of the firewall and pass the power harness into the cabin. Fig. 2

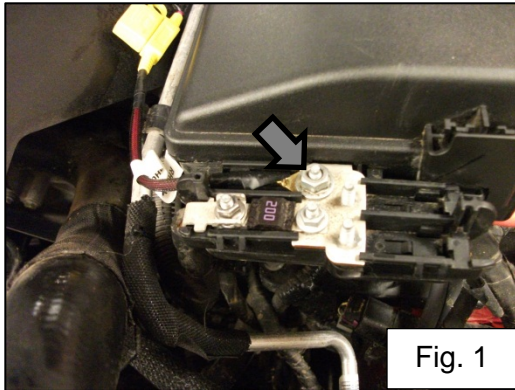


Fig. 1

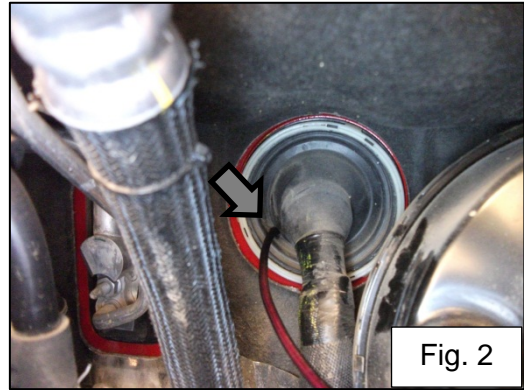


Fig. 2

5. Install the black two pin power connector on the subwoofer power harness by first inserting the terminal fully into the connector and then depressing the blue retainer. Fig. 3

Note: Make sure the blue retainer in the center of the connector is not depressed – it should be flush with the front of the connector. If the retainer is depressed, the terminal will not fully seat in the connector body. Make sure the terminal is installed into position 1 on the connector body. There should be a block-out plug installed in position 2 in order to prevent the terminal from being installed into the wrong position on the connector.

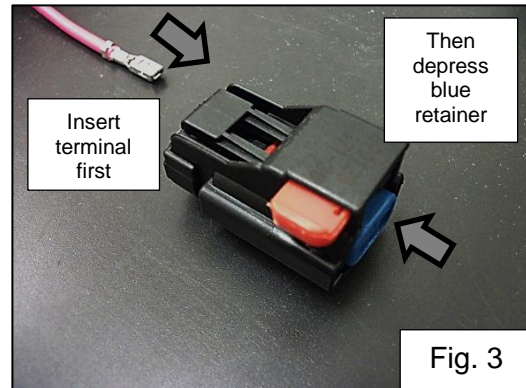


Fig. 3

Subwoofer Harness routing

6. Remove the driver side front and rear threshold panel along the bottom of the door opening. Fig. 4
7. Remove the filler panel on each side of the rear seat frame trim panel. Fig. 4
8. Remove the eleven bolts and rubber bumpers securing the rear seat frame trim panel and remove the trim panel from vehicle. Fig. 5

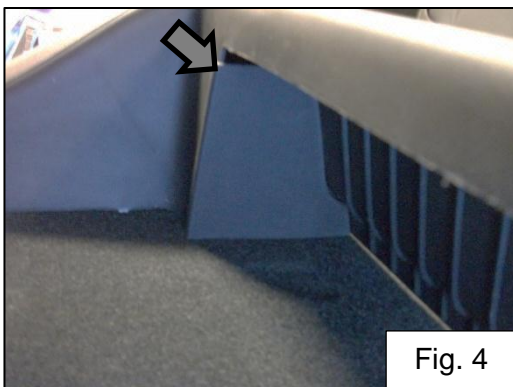


Fig. 4

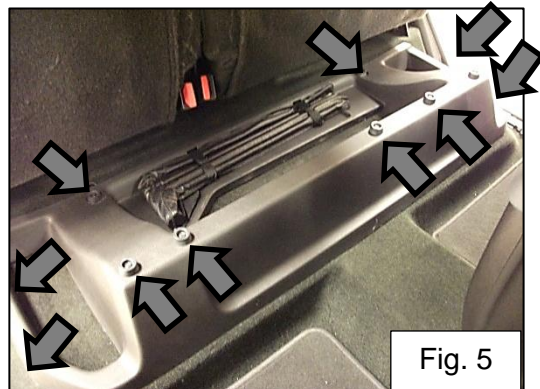


Fig. 5

9. Connect the subwoofer harness two-pin power connector to the power harness two-pin connector.
10. Find the gray and black connector in the drivers kick panel and carefully cut the fabric loom from the wire harness. Find the twisted pair of wires that are light blue and brown/light blue stripe. Install the supplied wiretaps onto the wires. Fig. 6

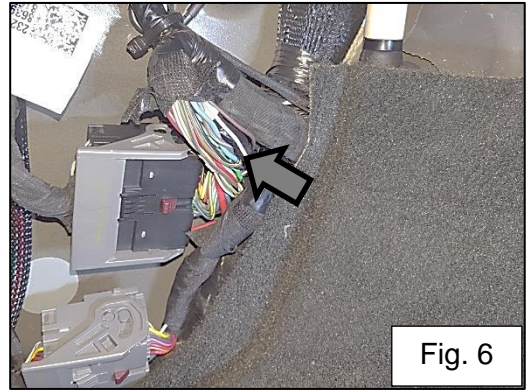


Fig. 6

11. Connect the green wire of the supplied adaptor harness to the light blue wire and the brown wire of the adaptor harness to the brown/light blue stripe wire.
12. Connect the adaptor harness to the subwoofer harness.
13. Ground the subwoofer harness to the bolt securing the left side of the dash. Tighten to 19Nm (14ft-lb) Fig. 7
14. Route the subwoofer harness along the driver side door openings. Pull harness under carpet and through hole near rear seat frame on the driver side. Fig. 8

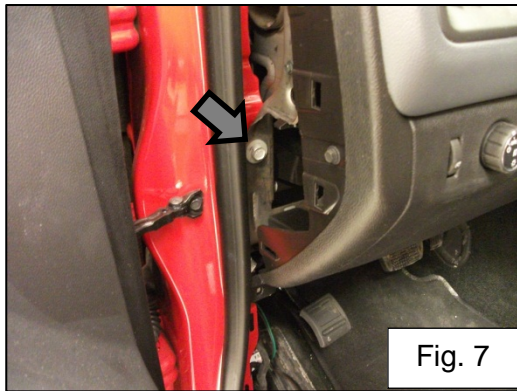


Fig. 7

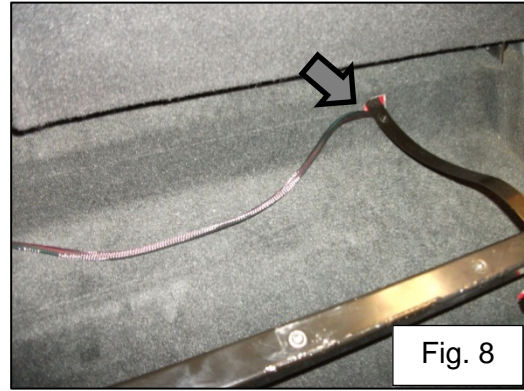


Fig. 8

15. Connect the subwoofer harness to the subwoofer.
16. Push down firmly on the subwoofer to slide it under the rear seat frame. Make sure the subwoofer bracket is fully installed over the nut insert in the rear seat frame. Install the supplied foam pieces along the front of the subwoofer enclosure where indicated in Fig. 9
17. Reinstall the rear seat frame trim panel over the subwoofer enclosure and reinstall the bolts and bumpers. It may be necessary to make slight adjustments to the subwoofer enclosure or rear seat trim panel position to perfectly center the enclosure. Reinstallation of the two filler panels on each side of the seat frame trim panel is possible, but not necessary. Fig. 10

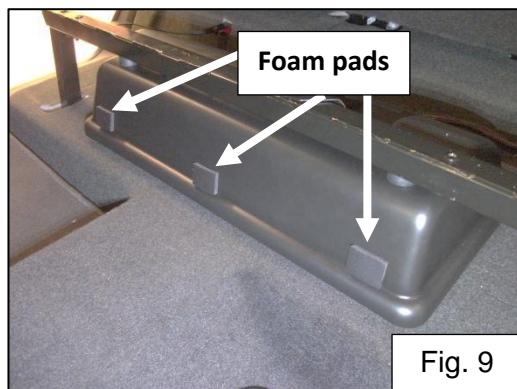


Fig. 9



Fig. 10

18. Reinstall all previously removed parts in reverse order.
19. Install supplied fuse into fuse holder.
20. Reconnect negative battery cable. Tighten to 7.5Nm (66in-lb)

Troubleshooting the Kicker Integrated Systems

If you experience a problem once the subwoofer or amplifier are installed use this guide to locate the trouble.

The radio is working, but the Subwoofer is not working:

- Check the battery voltage to make sure it is not discharged below 11 volts.
- Check the negative battery cable to see if it has been securely tightened back on the battery.
- Check the inline fuse located near the battery to make sure it is plugged in completely, and not blown.
- Check the inline +12 volt power connector near the firewall to make sure it is plugged in securely.
- Check the inline connectors near the subwoofer enclosure to make sure they are plugged securely.
- Check the ground wire connection to make sure it is tightly secured to the proper ground in the vehicle.
- Check the audio input signal connection to make sure it is secure and connected to the proper wiring.
- Test with different music in case there is no low frequency audio in the initial sound check.

Symptom	Possible Cause	Solution
No Subwoofer Output	Fuse not installed in inline fuse holder on subwoofer and / or amp harness	Install fuse into fuse holder. Refer to instructions for correct placement
	Low battery voltage	Recharge the battery
	Negative battery cable not connected	Reconnect negative battery cable
	Power wire connector not connected to body harness	Connect power wire to body harness. Check for loose connection
	Ground wire not grounded properly	Check ground wire with voltmeter to insure it is a good
	Balance or fader controls not set to neutral position	Set balance and fader control to center settings. (only effects stand-alone subwoofer kit)
	No low frequency information in music	Test with several different songs
	Subwoofer harness not properly / Completely connected to subwoofer.	Securely fasten both of the connectors on the subwoofer harness to the subwoofer. Check for loose connections.
Radio Not Coming On	Blown radio fuse	Refer to owner's manual for radio fuse location and value
	Low battery voltage	Recharge the battery

If you continue to experience problems after troubleshooting, please contact KICKER Technical Support at (800) 256-0808 ext. 6009, or support@kicker.com.



P.O. Box 459 • Stillwater, Oklahoma 74076 • USA • (405) 624-8510