

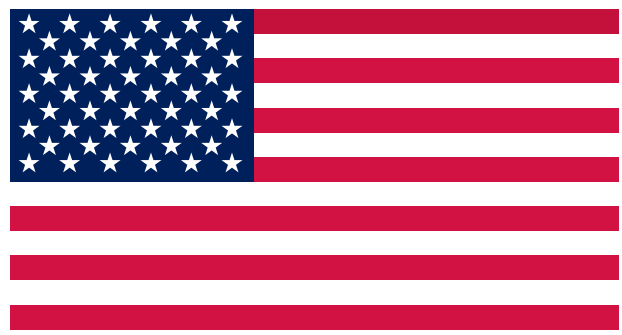
# KICKER®

*Select Language  
Owner's Manual*

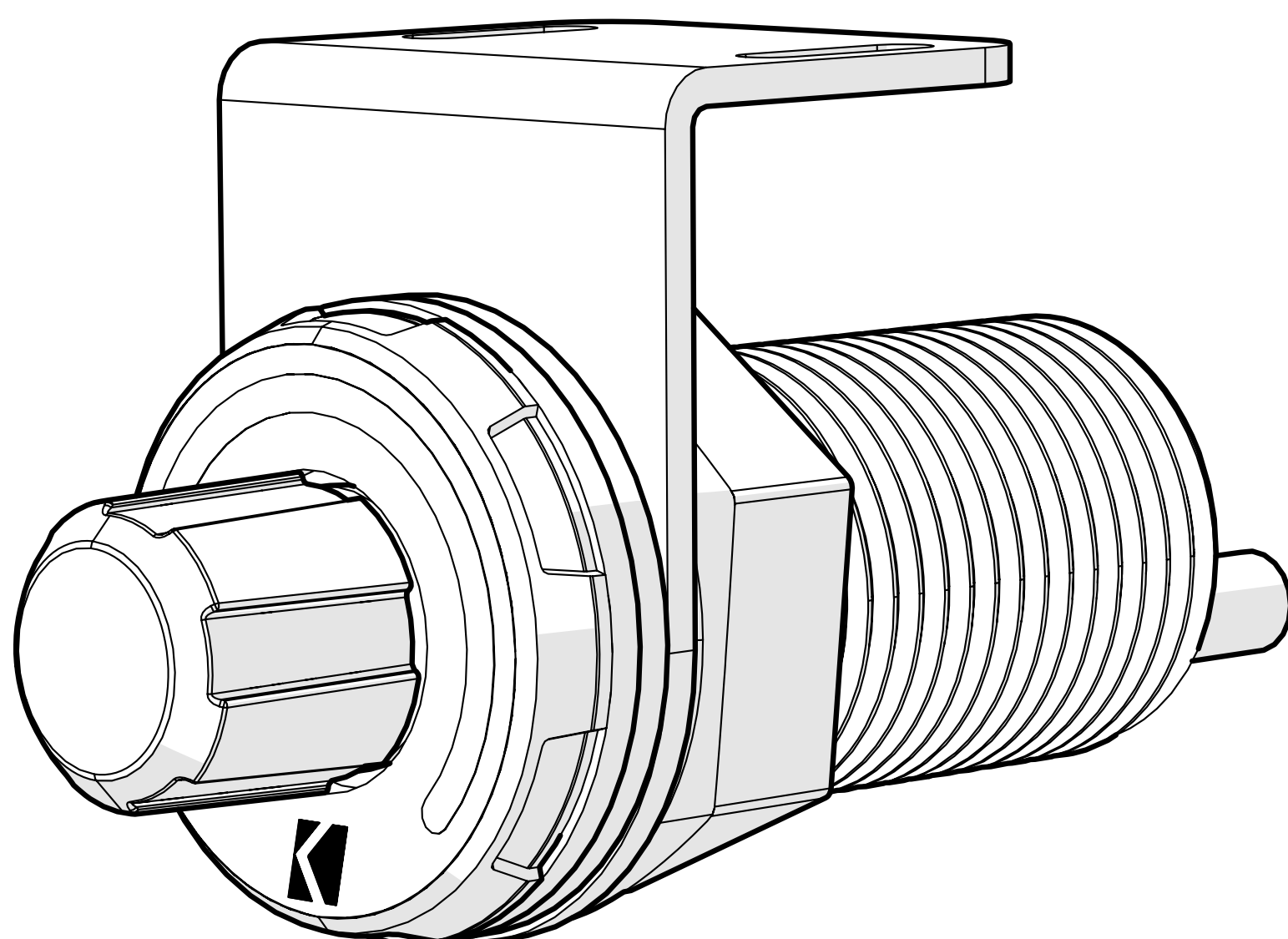
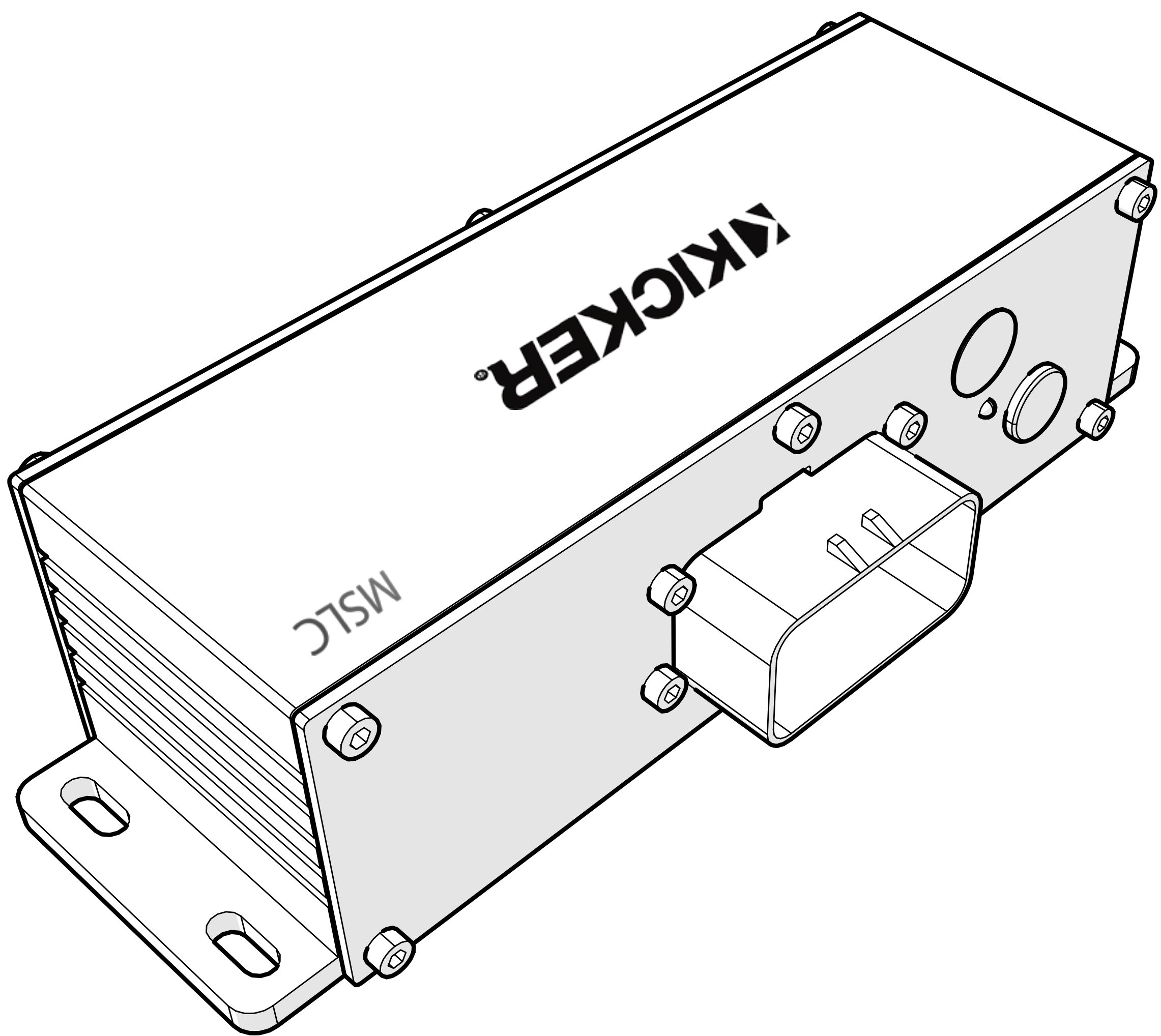
*Seleccione el Idioma  
Manual del  
Propietario*

*Choisir la Langue  
Manuel d'utilisation*

*Sprache Auswählen  
Benutzerhandbuch*



## MSLC RGBW LED Controller with Remote



# Contents

---

Overview ..... 2

Specifications ..... 3

Installation ..... 4

Wiring ..... 4

Control Box Mounting ..... 7

Remote Mounting ..... 8

Operation ..... 9

LED Modes ..... 9

Adjusting Microphone Gain .. 10

Setting Mic Gain ..... 11

Troubleshooting ..... 12

Warranty ..... 13

Int. Warranty ..... 15

# Overview

---

## **IMPORTANT SAFETY WARNING**

TO AVOID POTENTIAL INJURY OR POSSIBLE DEATH FROM MOVEMENT OF THE CONTROLLER DURING ABRUPT STOPS OR ACCIDENTS, THE CONTROLLER MUST BE PROPERLY INSTALLED AND SECURELY FASTENED TO YOUR BOAT OR VEHICLE. YOU ARE SOLELY RESPONSIBLE FOR SECURELY FASTENING THE CONTROLLER. MAKE SURE THE MOUNTING SCREWS WILL NOT PUNCTURE THE GAS TANK/BRAKE LINES/WIRING OR INTERFERE WITH ANY MECHANICAL PARTS ON THE UNDERSIDE OF THE MOUNTING SURFACE. THIS DEVICE HANDLES HIGH CURRENT. INCORRECT WIRING CAN CAUSE FIRE, DAMAGE TO EQUIPMENT, OR PERSONAL INJURY. ALWAYS DISCONNECT THE BOAT'S BATTERY BEFORE INSTALLATION. WATER EXPOSURE. ALTHOUGH THE MSLC IS SEALED FOR MARINE ENVIRONMENTS, IT IS NOT INTENDED FOR SUBMERSION. MOUNT IN A DRY, WELL-VENTILATED LOCATION. OVERLOADING. DO NOT EXCEED 20 AMPS TOTAL LOAD. OVERLOADING MAY CAUSE OVERHEATING OR FAILURE.

The KICKER MSLC (Marine Sound Lighting Controller) is the ultimate RGBW LED controller for marine and outdoor environments you can buy. Delivering up to 300 Watts (20 A) of continuous, noise-free power, the MSLC seamlessly powers multiple LED-equipped speakers, subwoofers, tower lights, underwater accents, and more, ensuring vibrant, customizable lighting that syncs perfectly with your KICKER marine audio system. With intuitive wired remote control, you can effortlessly select from 18 stunning colors (including true white), adjust brightness in 5 levels, and engage dynamic modes like music-sync flashing, pulsing, or auto color-cycling. Built tough for marine environments with water resistance and noise-free MOSFET circuitry, the MSLC eliminates audio interference while providing reliable, high-current output for the brightest, clearest lighting on your boat. Whether you're cruising the lake or hitting the wake, the MSLC turns your vessel into a floating light show without the hassle of apps or unreliable wireless connections. We hope you have the chance to combine this new controller with our whole line of marine products, including speakers, subwoofers, and amplifiers, for the best audio and lighting experience money can buy!

# Specifications

Model:	MSLC
Power Supply	12 VDC (10.5–15.5 VDC operating range)
Maximum Continuous Output	20 Amps / 300 Watts
Color Options	18 selectable colors including True White
Brightness Levels	5 Steps (20%, 40%, 60%, 80%, 100%)
Dynamic Modes	5 - Music Mode (via built-in microphone), Flash, Pulse, Color-Change, Solid
Speed Adjustment	10 Levels (Flash & Pulse modes only)
Control Box Height	2-1/16", 52 mm
Control Box Width	7-17/32", 191 mm
Control Box Depth	2-5/16", 59 mm
Remote Diameter	1-11/32", mm
Remote Depth	2", 50.8 mm
Remote Cutout	1", 25.4 mm
Remote Wire Length	13ft, 4 m
Wiring Harness	Length - 15-3/4", 400 mm Power - 10 AWG Ground - 10 AWG RGBW LED Wires - 14 AWG Black LED Wire - 12 AWG

# Installation

## Wiring

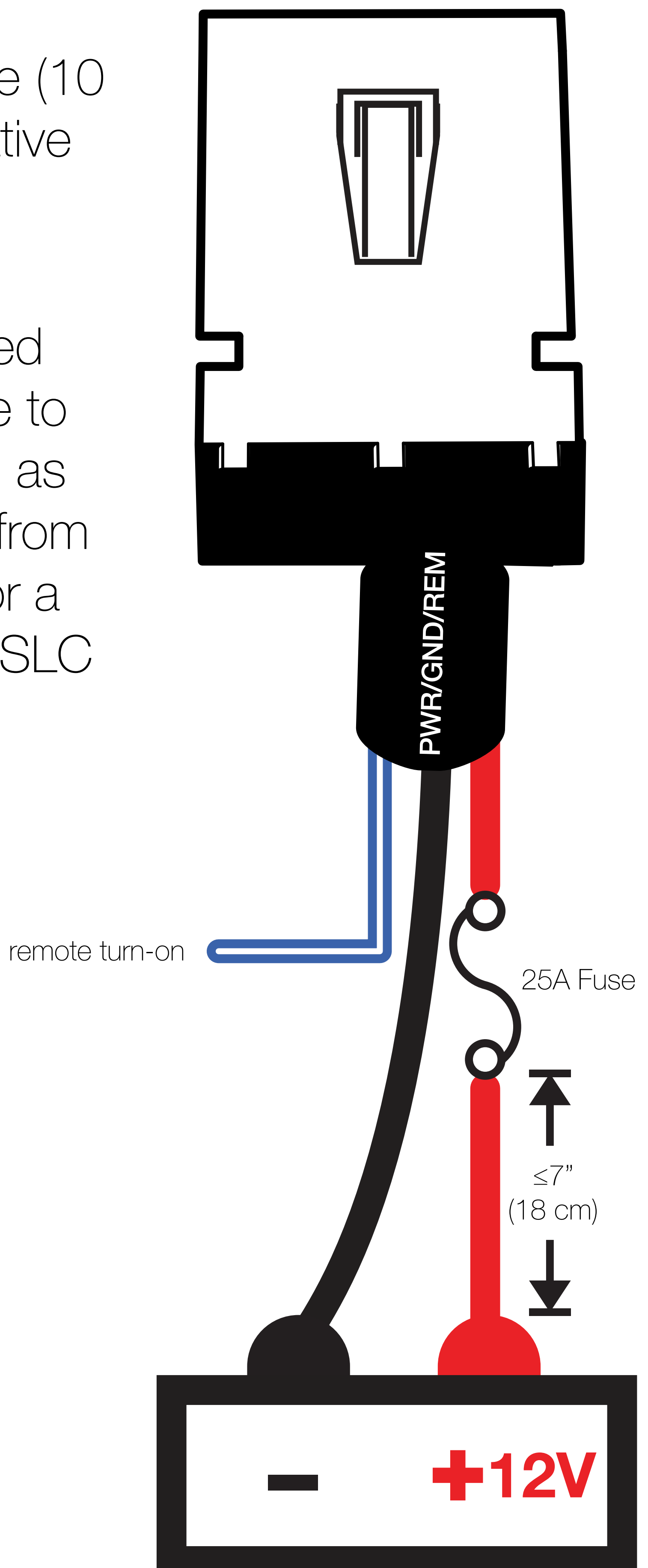
### Important

Disconnect the boat's battery before starting. Use marine-grade wire, connectors, and tools. If unsure, consult a professional installer.

Connect the harness's main power wire (10 AWG, red) to a +12V source, such as battery-positive with an inline ignition-protected 25A fuse. The fuse should be within 7 inches or less of the battery.

Connect the ground wire (10 AWG black) to the negative terminal of the battery.

Connect the white-striped blue remote turn-on wire to a switched source such as ignition, remote turn on from your audio source unit or a switch. This turns the MSLC on and off

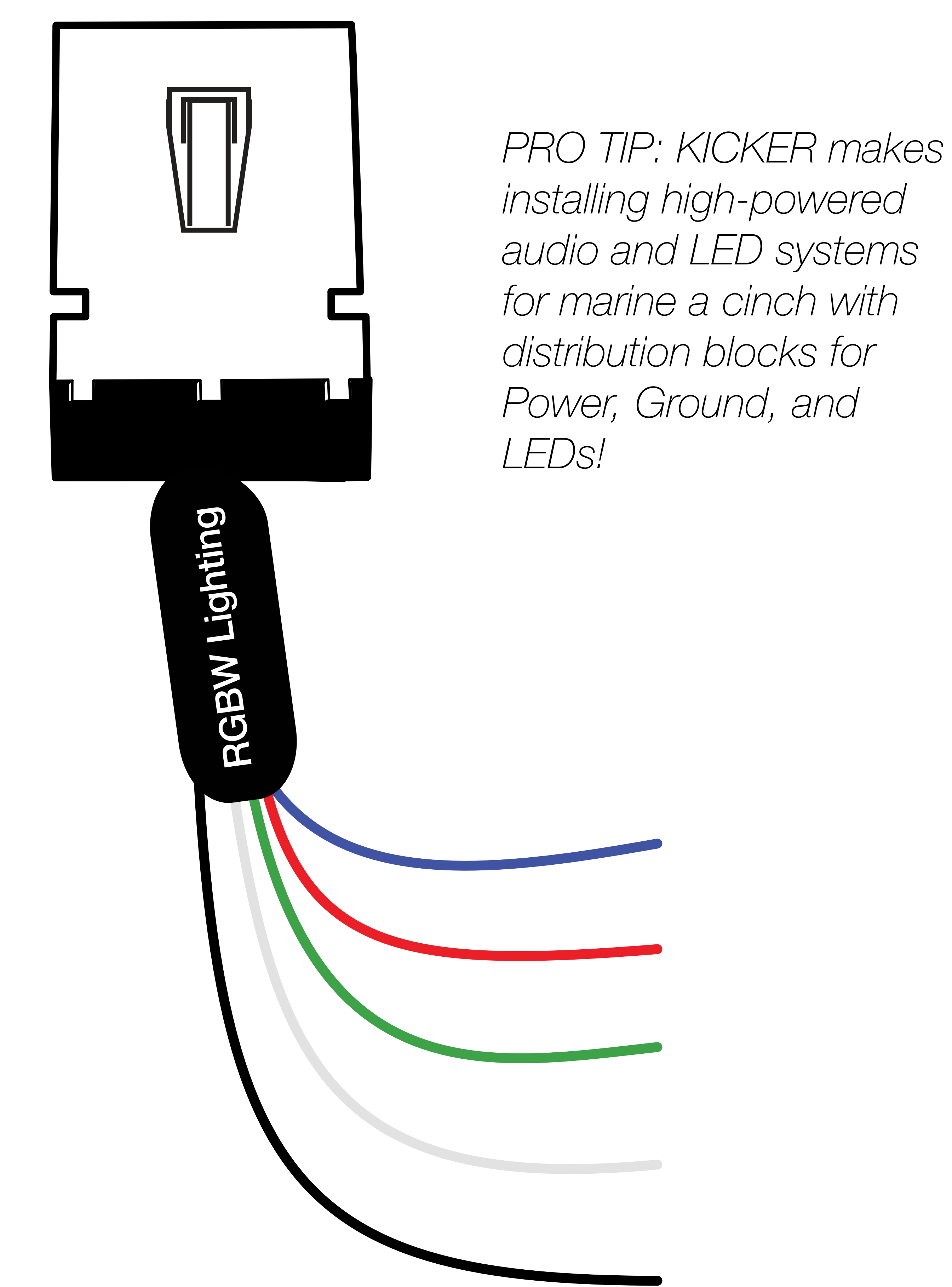




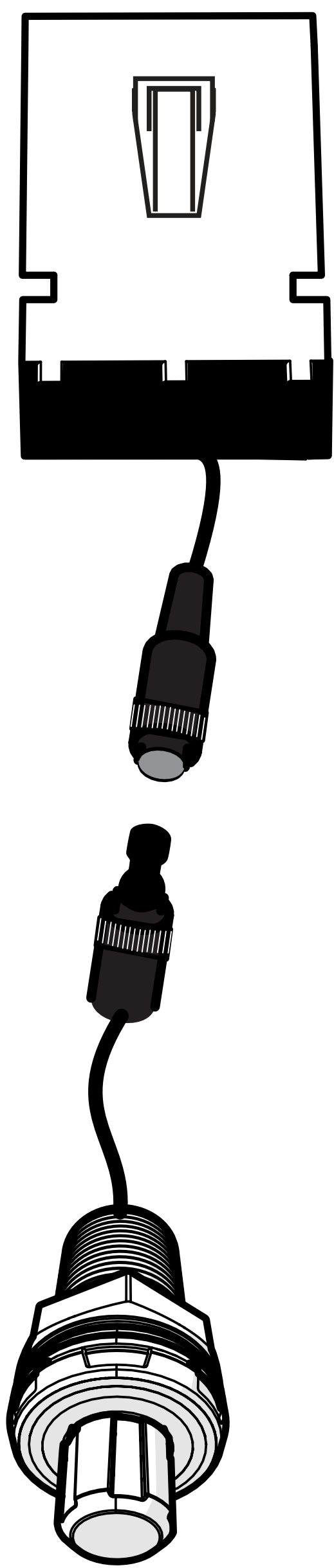
The LED loom of the wiring harness has 14 AWG wires for red, green, blue, and white, and a 12 AWG black wire.

Connect the red, blue, green, white, and black LED wires to the corresponding LED wires of your KICKER Premium Marine speaker, subwoofer, or enclosure, or RGBW-compatible product. The black lead is +12V and the blue, red, green and white leads are ground.

Secure all connections with marine-grade protection.

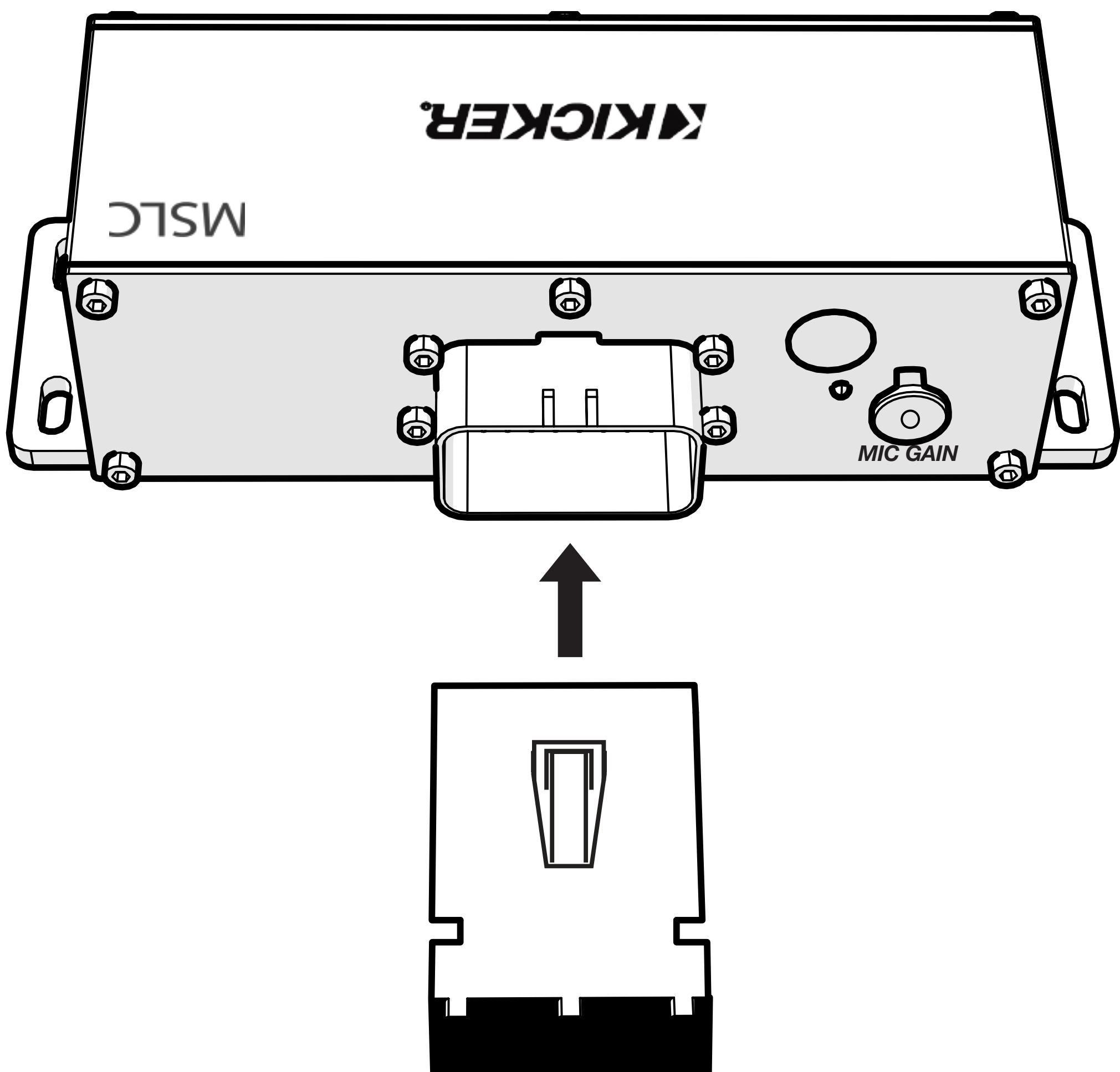


Connect the wired remote Plug the wired remote into the dedicated remote control wire from the MSLC control box. The connector is keyed; do not force it.



*If needed, The MSLC comes with a 4m extension cable to connect the remote control to the control box. Additional 4m extension cables can be purchased from the KICKER website.*

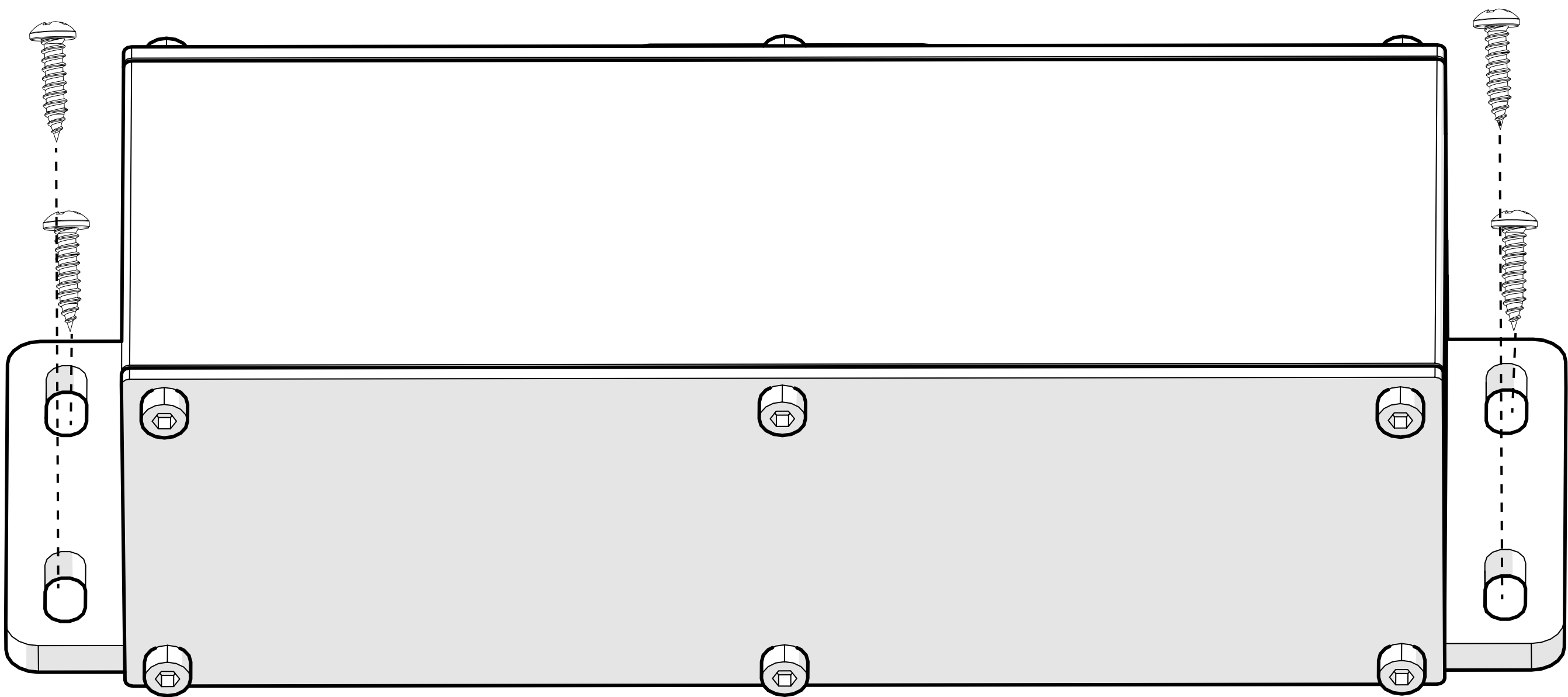
Insert the wiring harness connector into the MSLC control box.



# Control Box Mounting

Select a structurally sound, flat location for mounting the MSLC Control Box. Ensure mounting screws do not puncture fuel tanks, brake lines, wiring, or interfere with any mechanical components beneath the surface. Allow at least 4 inches (10 cm) of clear space around the MSLC Control Box for proper ventilation. Whenever possible, install the controller in a climate-controlled passenger compartment for optimal performance and longevity. If the supplied mounting hardware is not applicable to your installation, some other means of securely attaching the controller must be used.

Securely attach the MSLC Control Box to the boat, vehicle or other surface with the supplied mounting screws.



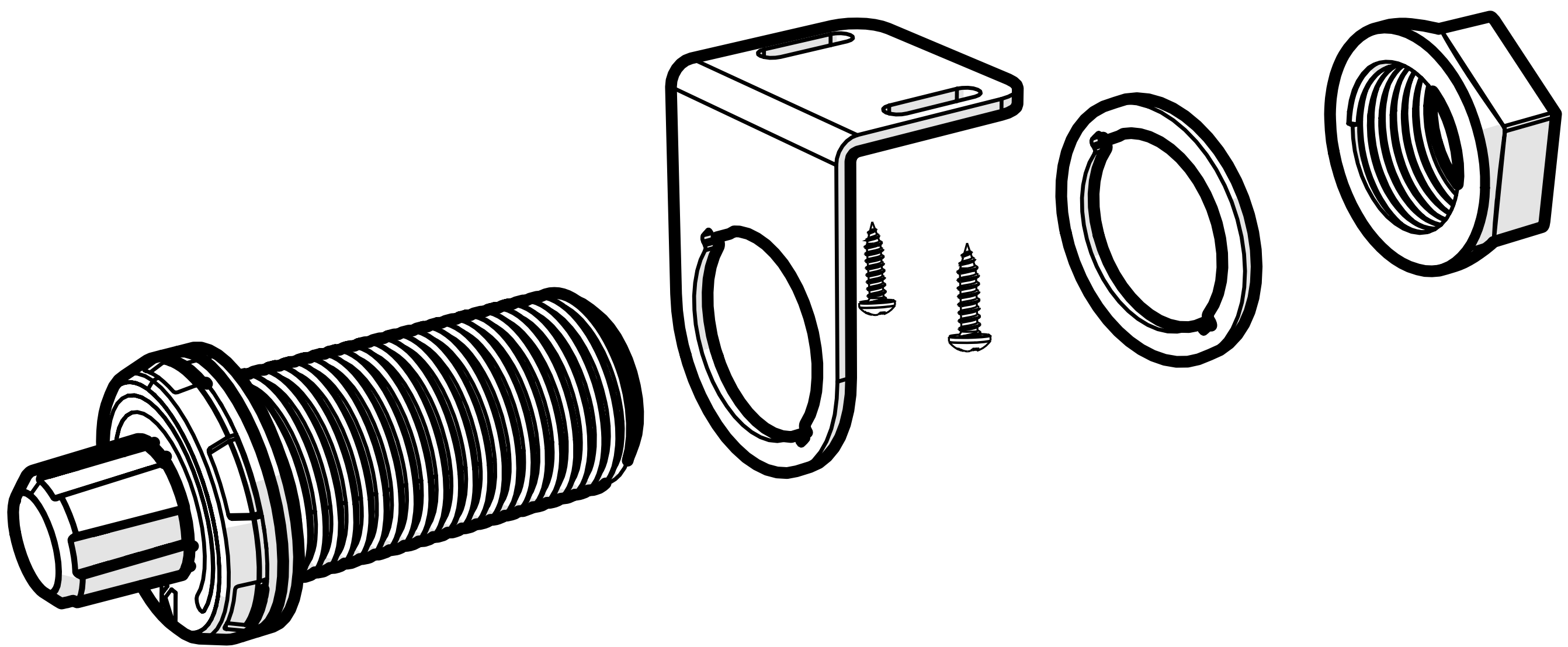


# Remote Mounting

## Remote Surface Mount

Secure the MSLC Remote Bracket to a surface using the included screws.

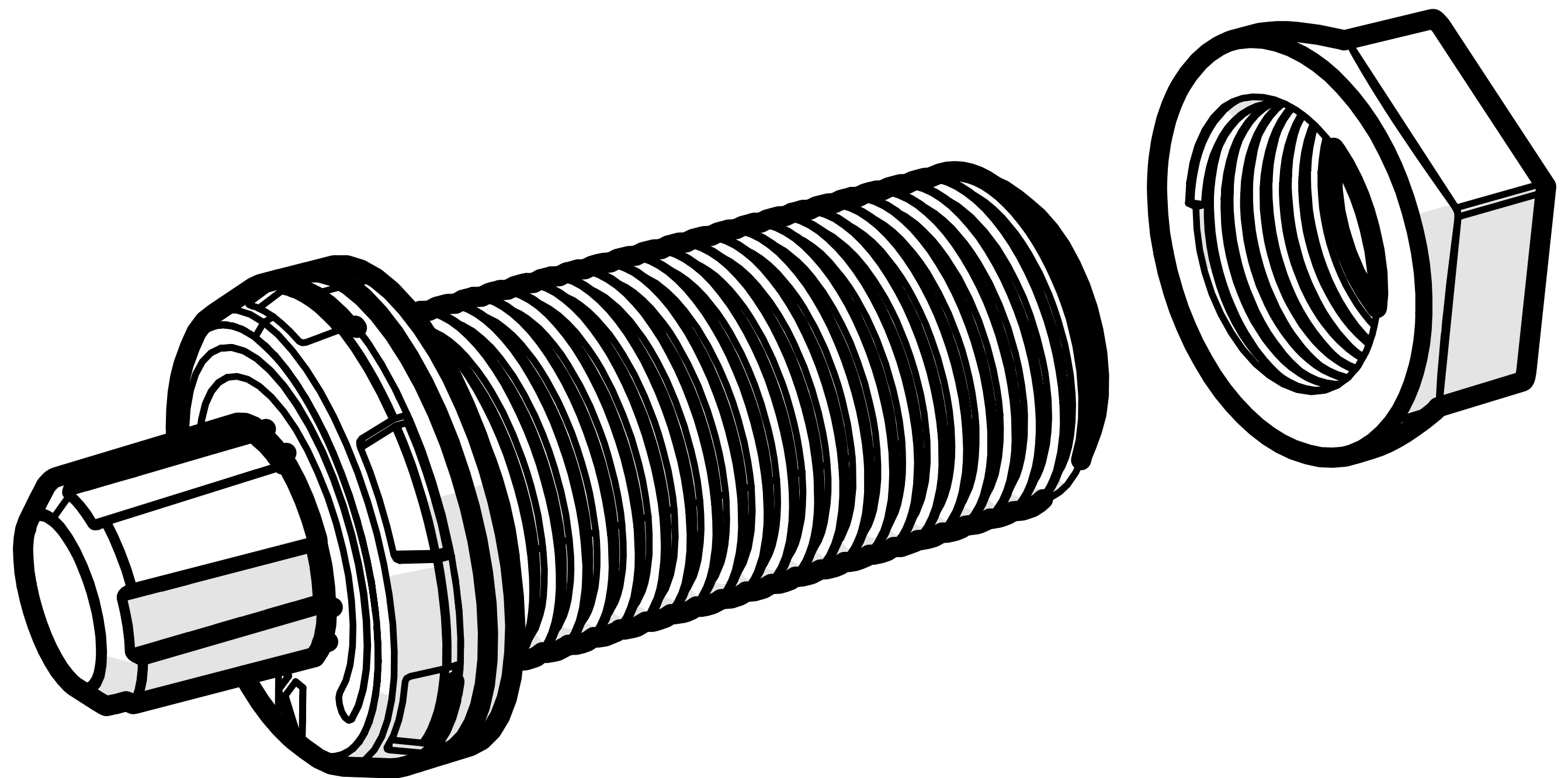
Place the Rubber Washer behind the Mounting Bracket, then the Mounting Nut behind the Rubber Washer, then screw the MSLC Remote through the front of the bracket into the Mounting Nut.



## Remote Flush Mount

Cut a 1-inch diameter hole in the mounting surface to which you will secure the MSLC Remote.

Place the mounting nut behind the surface, then screw the MSLC Remote through the mounting surface into the Mounting Nut.



# Operation

---

## LED Modes

Control all functions via the wired rotary encoder & multi-function button with its multi-color LED ring for feedback. Push the knob to cycle through the available modes.

**Standard Mode (Solid Color Adjust):** By default, the MSLC will be in Standard Mode, in which turning the knob will cycle through 18 colors:

White, Red, Magenta, Pink, Orange, Gold, Yellow, Green Yellow, Light Green, Lime Green, Green, Cyan, Dark Cyan, Sky Blue, Light Blue, Blue, Medium Purple, and Purple. The color applies instantly.

**Intensity Mode (Brightness):** Press the knob once (ring blinks RED twice). Turn clockwise to increase from 20% to 100% in 5 steps, counterclockwise to decrease. **To Exit:** Wait 5 seconds or press once (ring blinks RED 5 times).

**Speed Regulation Mode (Flash/Pulse):** Double-press the knob (ring blinks BLUE twice). Turn clockwise to speed up, counterclockwise to slow down (10 levels). **To Exit:** Wait 5 seconds or double-click (ring blinks BLUE 5 times).

**Special Modes Menu:** Press and hold the knob for 3 seconds (ring blinks GREEN twice). Turn the knob to select Music Mode (syncs to audio via mic), Flash, Pulse, Color-Change (cycles colors), or Standard. Press the knob once to confirm. **To Exit:** Wait 15 seconds or press/hold (ring blinks GREEN 5 times). Special Modes use the current color unless in Color-Change.

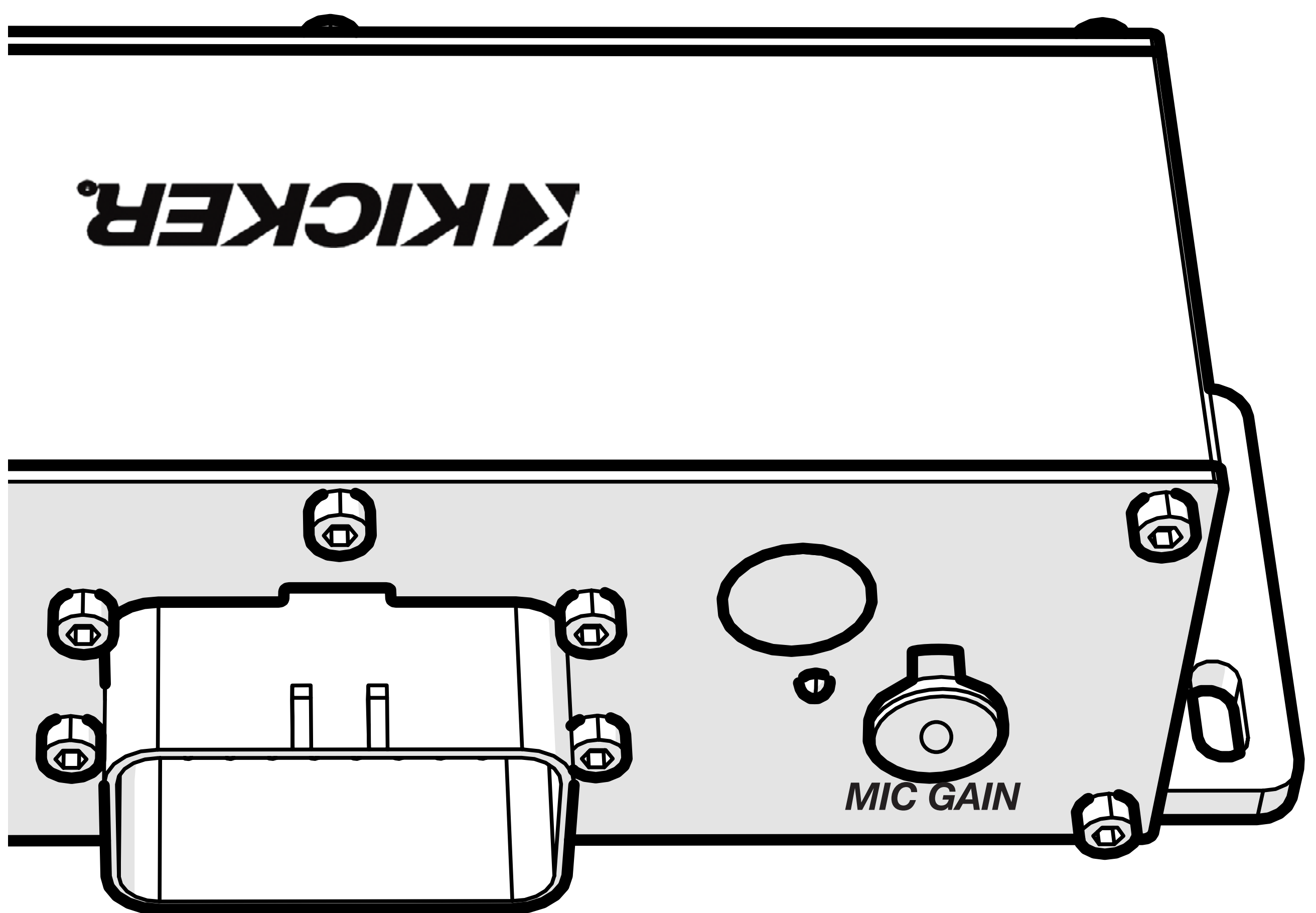
# Adjusting Microphone Gain

The built-in microphone in the MSLC Control Box is used for Music Mode to sync LEDs with the audio. If the lights are too sensitive (always on or reacting to minor noises) or not sensitive enough (not responding to music), adjust the microphone gain potentiometer located on the MSLC Control Box labeled “Mic Gain”. **IMPORTANT:** Mic Gain is set to maximum (most sensitive) out of the box. Rotate the gain dial counter-clockwise to reduce sensitivity.

Locate the rubber cover next to the Wiring Harness Connector labeled “Mic Gain”.

Gently remove the rubber cover to expose the gain adjustment dial.

Use a slotted screwdriver to rotate the gain dial. Turn clockwise to increase gain (more sensitive) or counterclockwise to decrease gain (less sensitive).



# Setting Mic Gain

Power on the MSLC and enter Music Mode via the Special Modes Menu (press and hold the knob for 3 seconds, turn to Music Mode, then press to confirm).

Play music through your audio system at your typical listening volume.

Observe the LED lights' response. They should pulse and flash in sync with the music's beat and intensity without constant triggering from background noise or failing to react to peaks.

If too sensitive (always on), turn the gain dial counterclockwise in small increments and retest. If not sensitive enough (lights barely respond), turn the gain dial clockwise in small increments and retest.

Repeat the previous steps until the response is optimal.

Replace the rubber cover securely to maintain water resistance.

Note: To avoid the LEDs constantly flashing with no music playing, lower the gain so the microphone is less sensitive. If issues persist, ensure the control box is mounted away from major noise sources.

# Troubleshooting

---

If your MSLC Controller does not appear to be working, check the obvious things first such as blown fuses, poor or incorrect wiring connections, incorrect setting of operations or gain controls, etc.

**No Power/Lights:** Check battery connection, inline fuse, power/ground wires, and remote turn-on. Ensure total load <25A. Verify harness is fully plugged in.

**No Response from Remote:** Inspect cable for damage or loose connections. Try reseating the plug.

**Lights Flicker or Dim:** Overloaded circuit, reduce accessories or check for short circuits. Ensure wire gauges match specs (e.g., 10-16 AWG).

**Wrong Colors or Modes:** Reset by power cycling. Confirm LED wiring matches RGBW channels (red to R, etc.). In Music Mode, ensure audio is playing near the mic.

**Audio Interference:** Rare due to noise-free design, but check grounding and separate power runs from audio cables.

**LED Ring Not Blinking:** Indicates mode entry/exit failure. power cycle and retry. If persistent, contact support.

**Overheating:** Improve ventilation or reduce load.

**Music Mode Not Responding:** Check microphone gain adjustment (see Operation section). Ensure mic is not obstructed and audio source is active.

**CAUTION:** When jump starting the vehicle, be sure that connections made with jumper cables are correct. Improper connections can result in blown amplifier fuses as well as the failure of other critical systems in the vehicle.

If you have more questions about the installation or operation of your new KICKER product, see the Authorized KICKER Dealer where you made your purchase. For more advice on installation, click on the SUPPORT section on the KICKER homepage, **[www.kicker.com](http://www.kicker.com)**. Please E-mail [support@kicker.com](mailto:support@kicker.com) or call Technical Services (405) 624-8583 for unanswered or specific questions.



# Warranty

---

When purchased from an Authorized KICKER Dealer, KICKER warrants this product to be free from defects in material and workmanship under normal use for a period of ONE (1) YEAR from date of original purchase with receipt. If this product is identified as “Refurbished” or “B Goods”, the warranty is limited to a period of THREE (3) MONTHS from the date of original purchase. In all cases you must have the original receipt. Should service be necessary under this warranty for any reason due to manufacturing defect or malfunction during the warranty period, KICKER will repair or replace (at its discretion) the defective merchandise with equivalent merchandise. Warranty replacements may have cosmetic scratches and blemishes. Discontinued products may be replaced with more current equivalent products. This warranty is valid only for the original purchaser and is not extended to owners of the product subsequent to the original purchaser. Any applicable implied warranties are limited in duration to a period of the express warranty as provided herein beginning with the date of the original purchase at retail, and no warranties, whether express or implied, shall apply to this product thereafter. Some states do not allow limitations on implied warranties; therefore, these exclusions may not apply to you. This warranty gives you specific legal rights; however you may have other rights that vary from state to state.

## **WHAT TO DO IF YOU NEED WARRANTY OR SERVICE:**

Defective merchandise should be returned to your local Authorized Stillwater Designs (KICKER) Dealer for warranty service. Assistance in locating an Authorized Dealer can be found at [www.KICKER.com](http://www.KICKER.com) or by contacting Stillwater Designs directly. You can confirm that a dealer is authorized by asking to see a current authorized dealer window decal.

If it becomes necessary for you to return defective merchandise directly to Stillwater Designs (KICKER), call the KICKER Customer Service Department at (405) 624-8510 for a Return Merchandise Authorization (RMA) number. Package only the defective items in a package that will prevent shipping damage, and return to:

**Stillwater Designs**  
**3100 North Husband St**  
**Stillwater, OK 74075**

The RMA number must be clearly marked on the outside of the package. Please return only defective components. The return of functioning items increases your return freight charges. Non-defective items will be returned freight-collect to you. For example, if a subwoofer is defective, only return the defective subwoofer, not the entire enclosure. Include a copy of the original receipt with the purchase date clearly visible, and a “proof-of-purchase” statement listing the Customer’s name, Dealer’s name and invoice number, and product purchased. Warranty expiration on items without proof-of-purchase will be determined from the type of sale and manufacturing date code. Freight must be prepaid; items sent freight-collect, or Cash-On-Demand, will be refused.

**WHAT IS NOT COVERED?**

- This warranty is valid only if the product is used for the purpose for which it was designed. It does not cover:
- o Damage due to improper installation
  - o Subsequent damage to other components
  - o Damage caused by exposure to moisture, excessive heat, chemical cleaners, and/or UV radiation
  - o Damage through negligence, misuse, accident or abuse. Repeated returns for the same damage may be considered abuse
  - o Any cost or expense related to the removal or reinstallation of product
  - o Speakers damaged due to amplifier clipping or distortion
  - o Items previously repaired or modified by any unauthorized repair facility
  - o Return shipping on non-defective items
  - o Products with tampered or missing barcode labels
  - o Products with tampered or missing serial numbers
  - o Products returned without a Return Merchandise Authorization (RMA) number
  - o Products purchased from an UNAUTHORIZED dealer
  - o Freight Damage
  - o The cost of shipping product to KICKER
  - o Service performed by anyone other than KICKER

**HOW LONG WILL IT TAKE?**

KICKER strives to maintain a goal of one week turnaround for all electronics (amplifiers, crossovers, equalizers, etc.) & acoustic returns. Delays may be incurred if lack of replacement inventory or parts is encountered. Failure to follow these steps may void your warranty. Any questions can be directed to the KICKER Customer Service Department at (405) 624-8510. Contact your International KICKER dealer or distributor concerning specific procedures for your country’s warranty policies.

# Int. Warranty | Garantía | Garantie

Contact your International KICKER dealer or distributor concerning specific procedures for your country's warranty policies.

Our goods come with guarantees that cannot be excluded under the **Australian Consumer Law**. You are entitled to a replacement or refund for a major failure and for compensation for any other reasonably foreseeable loss or damage. You are also entitled to have the goods repaired or replaced if the goods fail to be of acceptable quality and the failure does not amount to a major failure.

The phrase “Fuel for Livin’ Loud” refers to the uncompromising quality and unyielding energy associated with KICKER car stereos and the fact that we encourage our customers to strive for the best (“Livin’ Loud”) in all aspects of their lives. KICKER loudspeakers and amplifiers are leaders in the mobile audio system market and are therefore the “fuel” for our customers’ car stereo experience. We encourage all of our customers to follow local noise regulations regarding the permitted and appropriate volume levels outside the car.

## GARANTÍA INTERNACIONAL *Versión Español*

Comuníquese con su concesionario o distribuidor KICKER internacional para obtener información sobre procedimientos específicos relacionados con las normas de garantía de su país.

La frase “combustible para vivir la vida Livin’ Loud™ a todo volumen” se refiere al entusiasmo por la vida que la marca KICKER de estéreos de automóvil representa y a la recomendación a nuestros clientes de que vivan lo mejor posible (“a todo volumen”) en todo sentido. La línea de altavoces y amplificadores KICKER es la mejor del mercado de audio de automóviles y por lo tanto representa el “combustible” para vivir a todo volumen en el área de “estéreos de automóvil” de la vida de nuestros clientes. Recomendamos a todos nuestros clientes que obedezcan todas las reglas y reglamentos locales sobre ruido en cuanto a los niveles legales y apropiados de audición fuera del vehículo.

## GARANTIE INTERNATIONALE *Version Française*

Pour connaître les procédures propres à la politique de garantie de votre pays, contactez votre revendeur ou distributeur International KICKER.

L’expression “ carburant pour vivre plein pot “ fait référence au dynamisme de la marque KICKER d’équipements audio pour véhicules et a pour but d’encourager nos clients à faire le maximum (“ vivre plein pot “) dans tous les aspects de leur vie. Les haut-parleurs et amplificateurs KICKER sont les meilleurs dans le domaine des équipements audio et représentent donc pour nos client le “ carburant pour vivre plein pot “ dans l’aspect “ installation audio de véhicule “ de leur vie. Nous encourageons tous nos clients à respecter toutes les lois et réglementations locales relatives aux niveaux sonores acceptables à l’extérieur des véhicules.

## INTERNATIONALE GARANTIE *Deutsche Version*

Nehmen Sie mit Ihren internationalen KICKER-Fachhändler oder Vertrieb Kontakt auf, um Details über die Garantieleistungen in Ihrem Land zu erfahren.

Der Slogan “Treibstoff für Livin’ Loud” bezieht sich auf die mit den KICKER-Autostereosystemen assoziierte Lebensfreude und die Tatsache, dass wir unsere Kunden ermutigen, in allen Aspekten ihres Lebens nach dem Besten (“Livin’ Loud”) zu streben. Die Lautsprecher und Verstärker von KICKER sind auf dem Markt für Auto-Soundsysteme führend und stellen somit den “Treibstoff” für das Autostereoerlebnis unserer Kunden dar. Wir empfehlen allen unseren Kunden, sich bezüglich der zugelassenen und passenden Lautstärkepegel außerhalb des Autos an die örtlichen Lärmvorschriften zu halten.



P.O. Box 459  
Stillwater, Oklahoma 74076  
USA  
(405) 624-8510