

# KICKER®

47KEY500.1

500-Watt Mono Channel Amp with Start/Stop capability, RoHS Compliant

## Specifications

### Electrical Parameters

Power (@14.4V, <1%THD+N)	<b>4Ω</b>	300W x 1
Power (@14.4V, <1%THD+N)	<b>2Ω</b>	400W x 1
Power (@14.4V, <1%THD+N)	<b>1Ω</b>	500W x 1
Lowest Rated Impedance		1Ω
Signal to Noise Ratio (CEA)	<b>1W</b>	>-75dB
Signal to Noise Ratio	<b>Rated Power</b>	>-90dB
CMRR	<b>50Hz</b>	-40dB
Input Impedance		>20kΩ
Frequency Response		10Hz - 160Hz
Variable LoPass Filter	<b>24dB / Octave LR</b>	40Hz - 160Hz
Variable Subsonic Filter	<b>24dB / Octave LR</b>	10Hz - 40Hz
Standby Current (Remote Off)		<2mA
Idle Current (Remote On)		<1.5A
Remote Gain Attenuation		-26dB - 0dB
Low Level Input Sensitivity		125mV - 5V
High Level Input Sensitivity		1V - 40V
Under Voltage Protection		6V (warning at 10.5V)
Over Voltage Protection		16V

### What's in the box?

47KEY500.1
Signal Input Harness
KEY500.1 Customer Information Card
Hardware Pack - Mounting Hardware

### Physical Materials

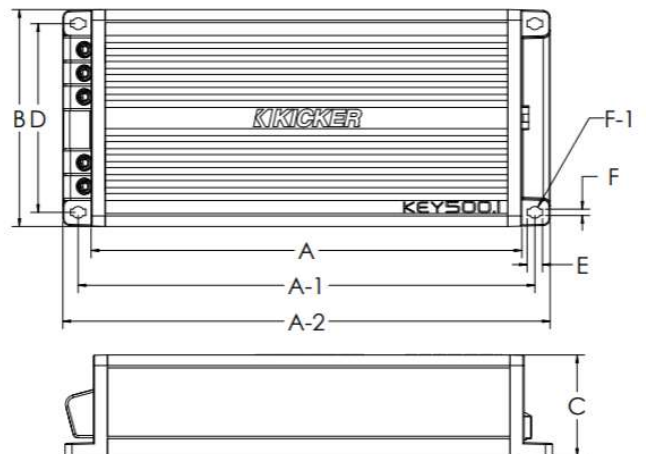
Heat Sink	Anodized Extruded Aluminum
End Caps	Painted Injection Molded ABS Plastic
Bottom Panel	Powder Coated Stamped Steel



### Features

- **KEY Technology** drastically improves audio quality
- **FIT+™ Differential Inputs** - near universal compatibility with source units
- **Auto EQ Algorithm** fixes signal and restores low bass response
- **Fully Start/Stop Compliant** - operational down to 6V
- **Extremely compact footprint** - perfect for space compromised vehicles
- **Remote output level control** with CXARC (sold separately)

### Unit Dimensions

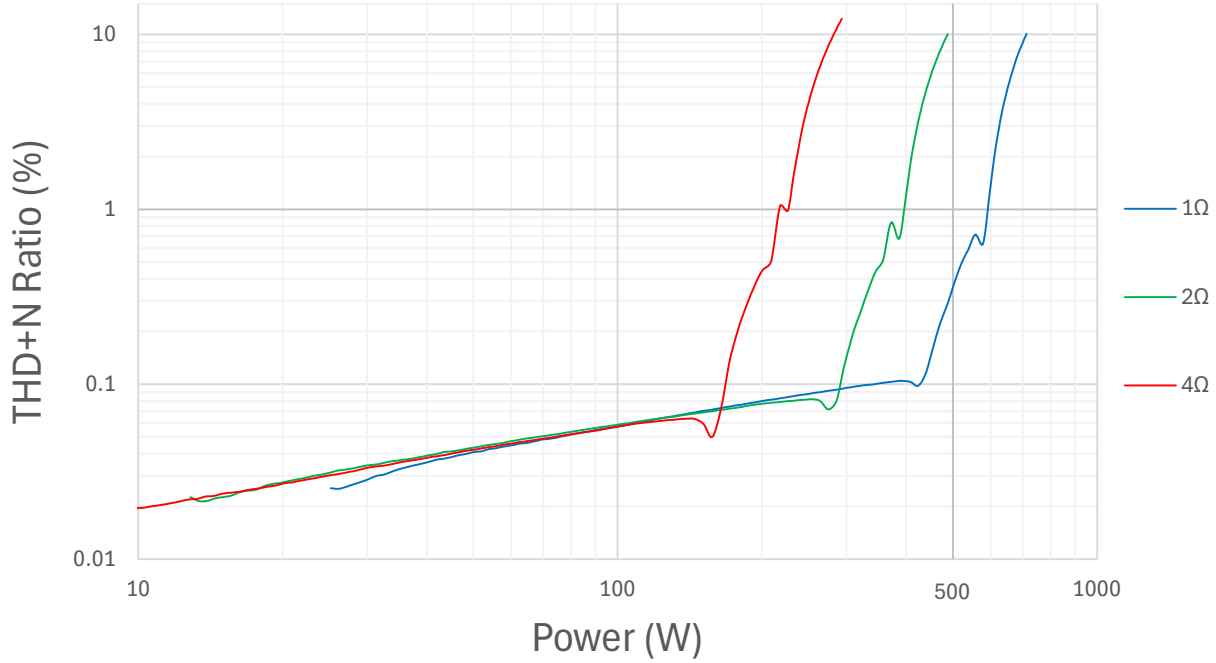


A - Chassis Length	7-7/32"	183.0mm
A-1 - Mounting Holes Location - Length	7-5/8"	194.0mm
A-2 - Overall Length	8-5/32"	207.0mm
B - Overall Width	3-5/8"	92.0mm
C - Overall Height	1-11/16"	43.0mm
D - Mounting Holes Location - Width	3-5/32"	80.0mm
E - Mounting Hole Length	1/4"	6.5mm
F - Mounting Hole Width	3/32"	2.7mm
F-1 - Mounting Hole Diameter	3/32"	2.5mm

# Technical Graph Data

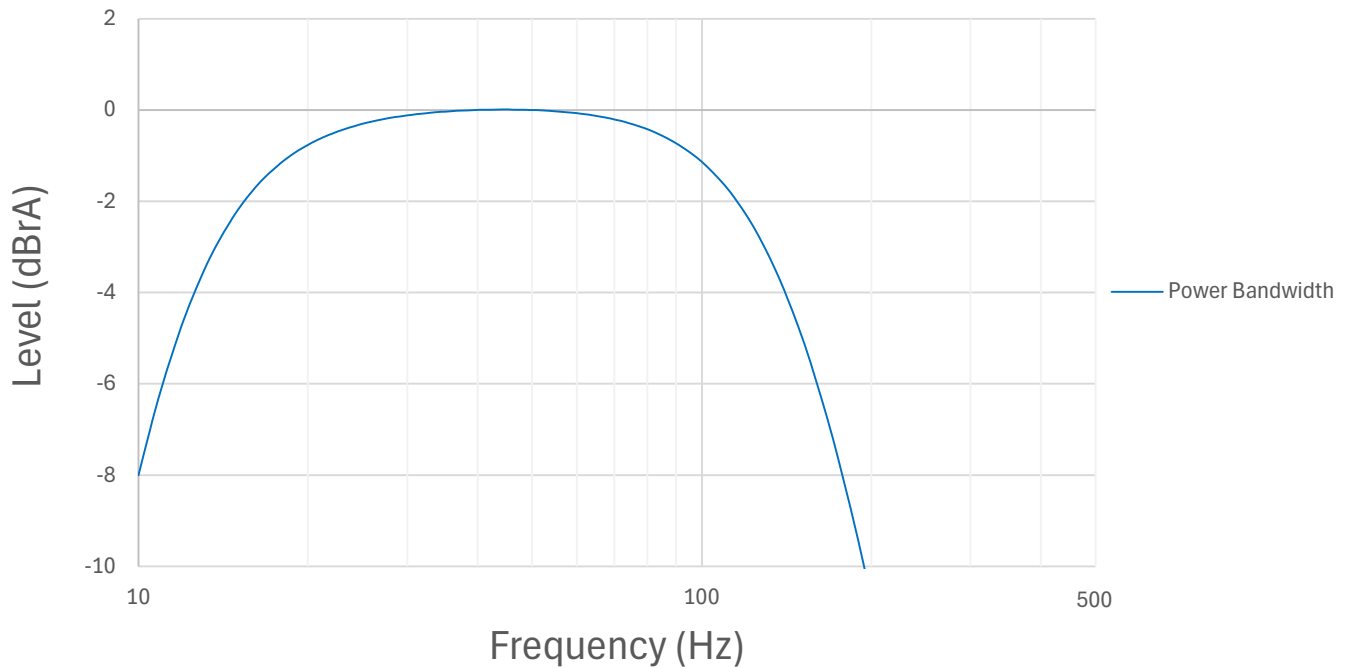
## THD+N vs. Power (W) @14.4VDC

THD+N Ratio (%) vs. Power (W)



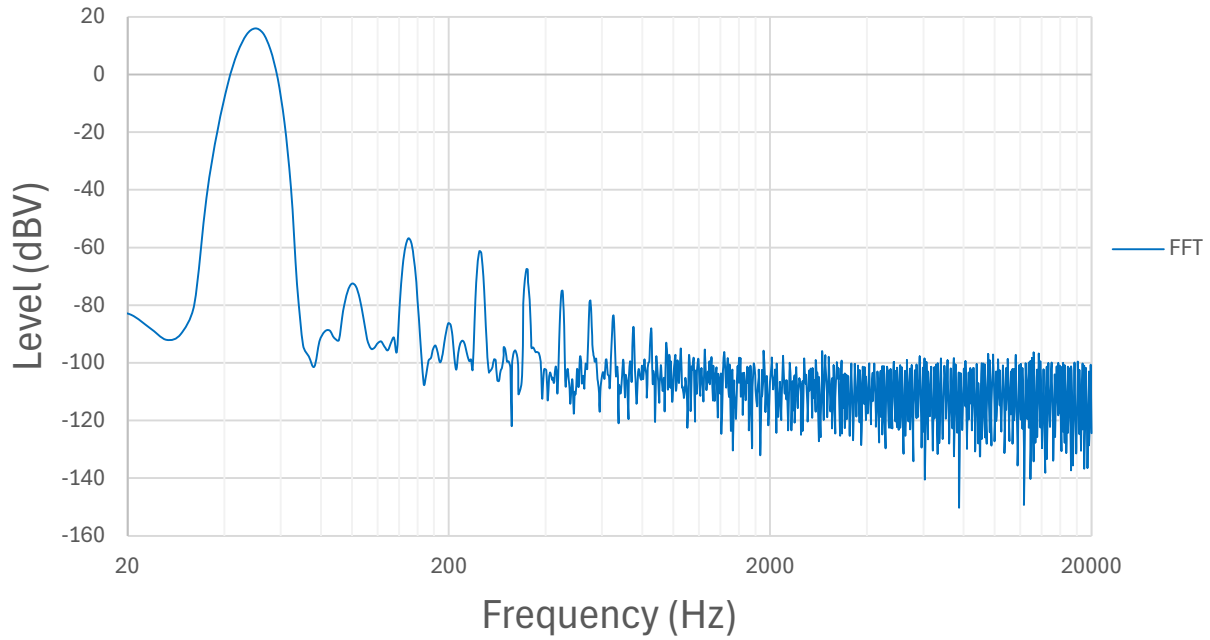
## Power Bandwidth (4Ω) @14.4VDC

Power Bandwidth, re: Rated Power (300W @ 4Ω)



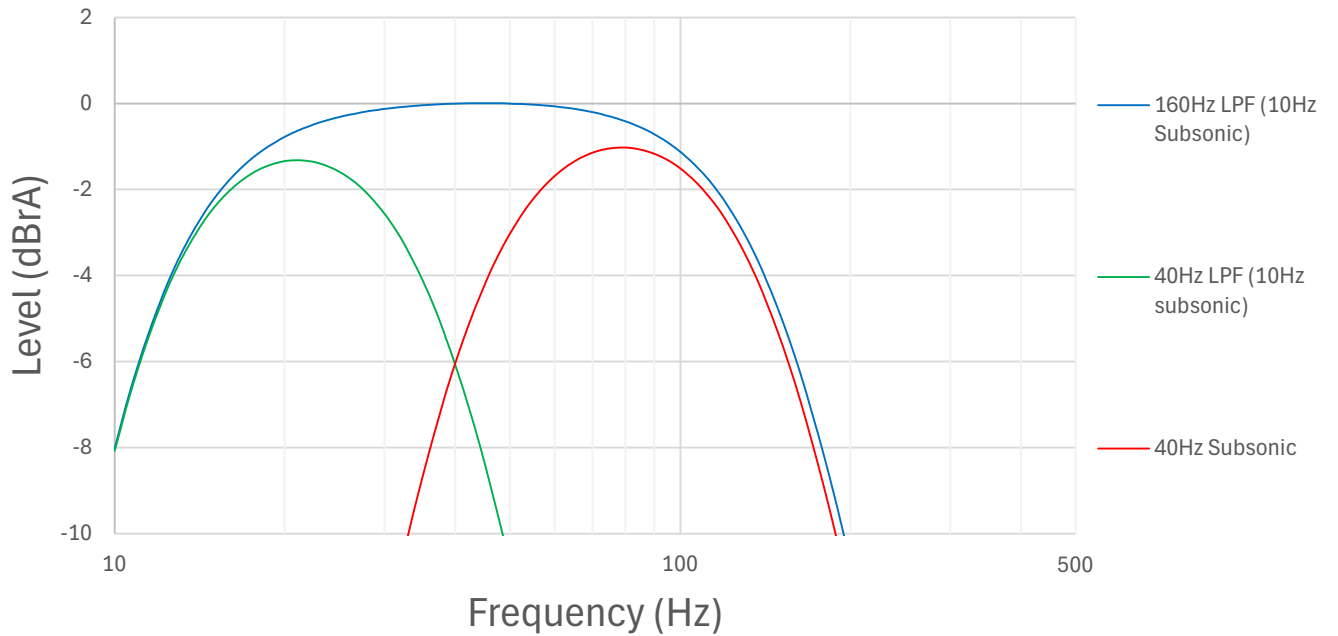
# FFT

## FFT (50Hz Signal)



# Crossover Frequency Response

## Crossover Frequency Response



KickEQ™

