

# KICKER®

53VXA1000.1

1000 Watt Class D Mono Amplifier, RoHS Compliant

## Specifications

### Electrical Parameters

Power (@14.4V, <1%THD+N)	<b>4Ω</b>	400W x 1
Power (@14.4V, <1%THD+N)	<b>2Ω</b>	750W x 1
Power (@14.4V, <1%THD+N)	<b>1Ω</b>	1000W x 1
Dynamic Power (@14.4V, <10%THD+N)	<b>1Ω</b>	1400W
Lowest Rated Impedance		1Ω
Signal to Noise Ratio (CEA)	<b>1W</b>	>-70dB
Signal to Noise Ratio	<b>Rated Power</b>	>-95dB
CMRR	<b>50Hz</b>	-40dB
Input Impedance		100kΩ
Frequency Response		10Hz - 200Hz
Variable LoPass Filter	<b>12dB / Octave BW</b>	50Hz - 200Hz
Fixed Subsonic Filter	<b>24dB / Octave BW</b>	15Hz
KickEQ™ Variable Bass Boost	<b>40Hz</b>	0dB - 6dB
Standby Current (Remote Off)		<2mA
Idle Current (Remote On)		<3A
Current Draw (Rated Power)		<100A
Remote Gain Attenuation		-26dB - 0dB
Input Sensitivity		125mV - 10V
Under Voltage Protection		8V
Over Voltage Protection		16V

### What's in the box?

53VXA1000.1 Amplifier

VXARC Remote Bass Control and Cable

VX Amplifiers Mono Customer Information Card

KICKER® Birth Certificate

Hardware Pack - 3mm Hex Key, Mounting Hardware

### Physical Materials

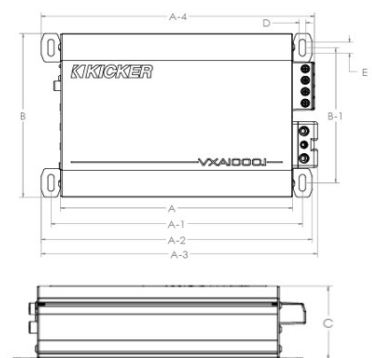
Heat Sink	Powder Coated Extruded Aluminum
End Plate	Powder Coated Stamped Steel
Bottom Plate	Powder Coated Stamped Steel
VXARC Bass Knob	Painted Injection Molded Plastic



### Features

- Variable Active Crossover for ideal speaker matching
- Subsonic Filter for subwoofer protection
- Compatible with Start/Stop vehicle technology
- Class SB Source Unit Compatible
- KickEQ™ Bass Boost for additional low frequencies
- FIT™ Differential Inputs - near universal compatibility with source units
- Compact Footprint fits almost anywhere
- VXARC Remote Bass Control Included

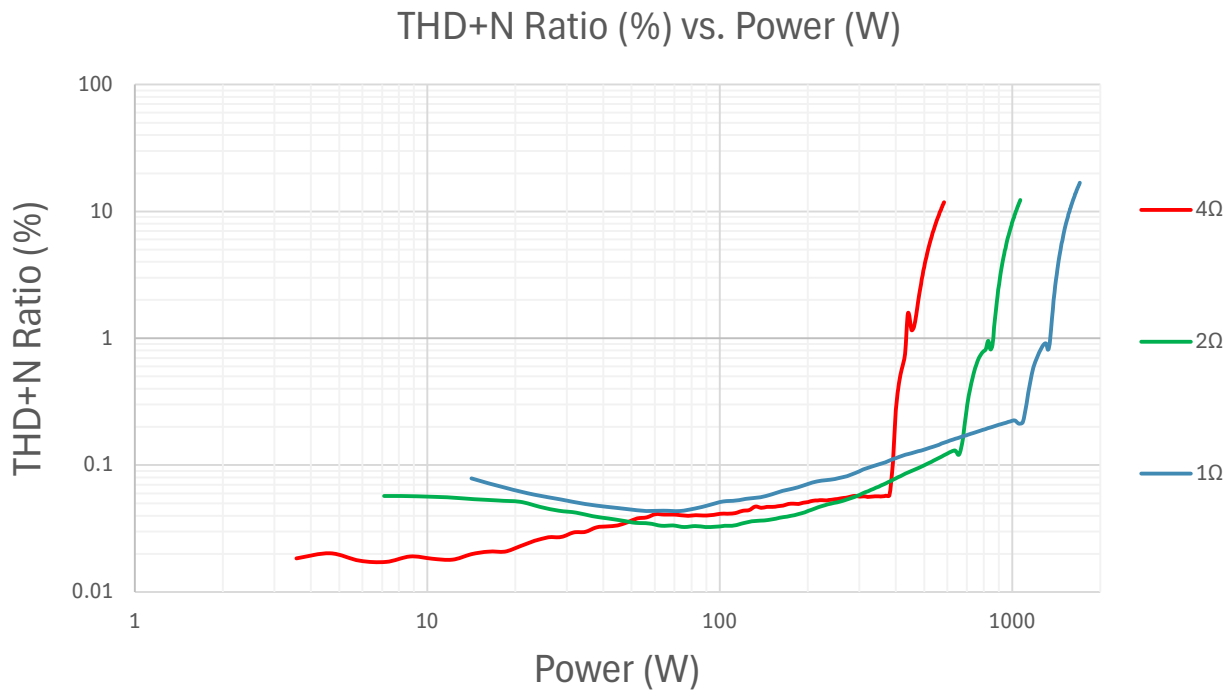
### Unit Dimensions



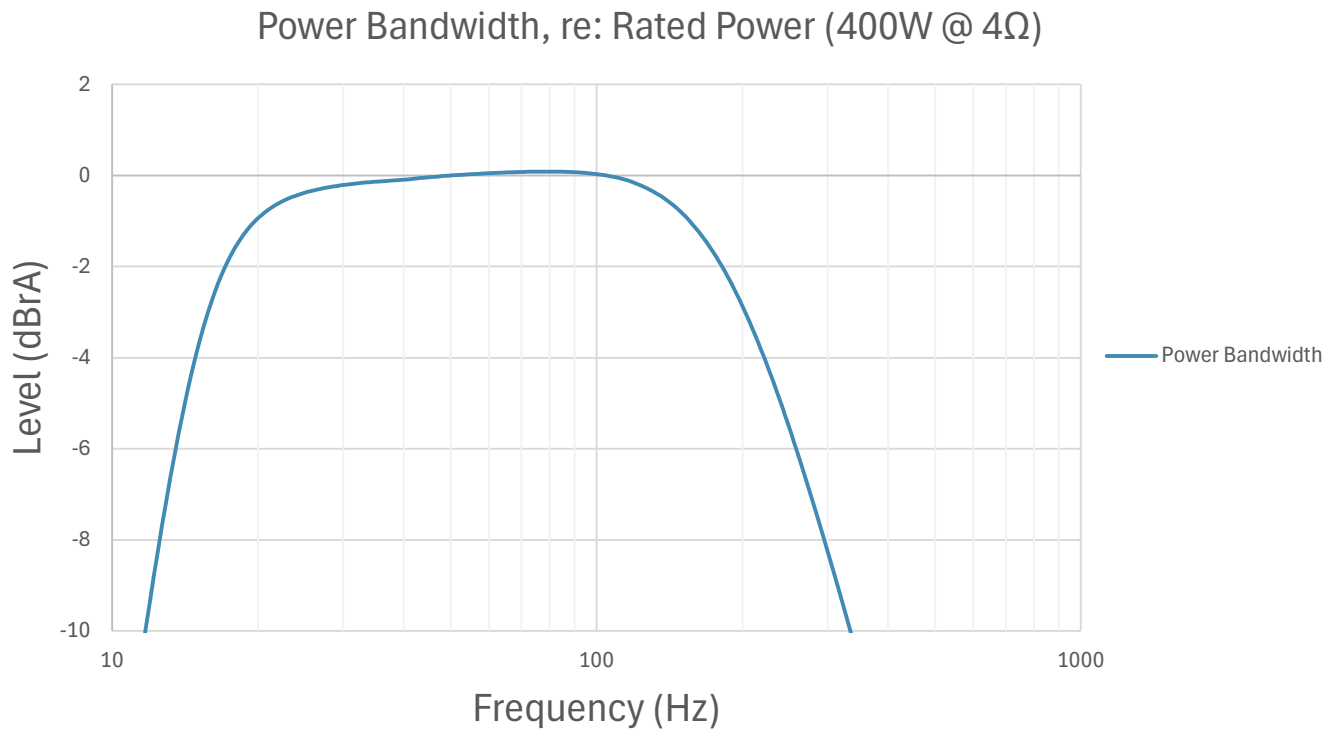
A - Chassis Length	<b>8"</b>	<b>203.0mm</b>
A-1 - Mounting Holes Location - Length	<b>8-21/32"</b>	<b>220.0mm</b>
A-2 - Mounting Bracket End to End - Length	<b>9-11/32"</b>	<b>237.0mm</b>
A-3 // A-4 - Overall Length	<b>9-1/2"</b>	<b>241.6mm</b>
B - Overall Width	<b>5-29/32"</b>	<b>150.0mm</b>
B-1 - Mounting Holes Location - Width	<b>4-7/8"</b>	<b>124.0mm</b>
C - Overall Height	<b>2-3/16"</b>	<b>55.5mm</b>
D - Mounting Holes Width	<b>7/32"</b>	<b>5.5mm</b>
E - Mounting Holes Length	<b>13/32"</b>	<b>10.0mm</b>

## Technical Graph Data

### THD+N vs. Power (W) @14.4VDC

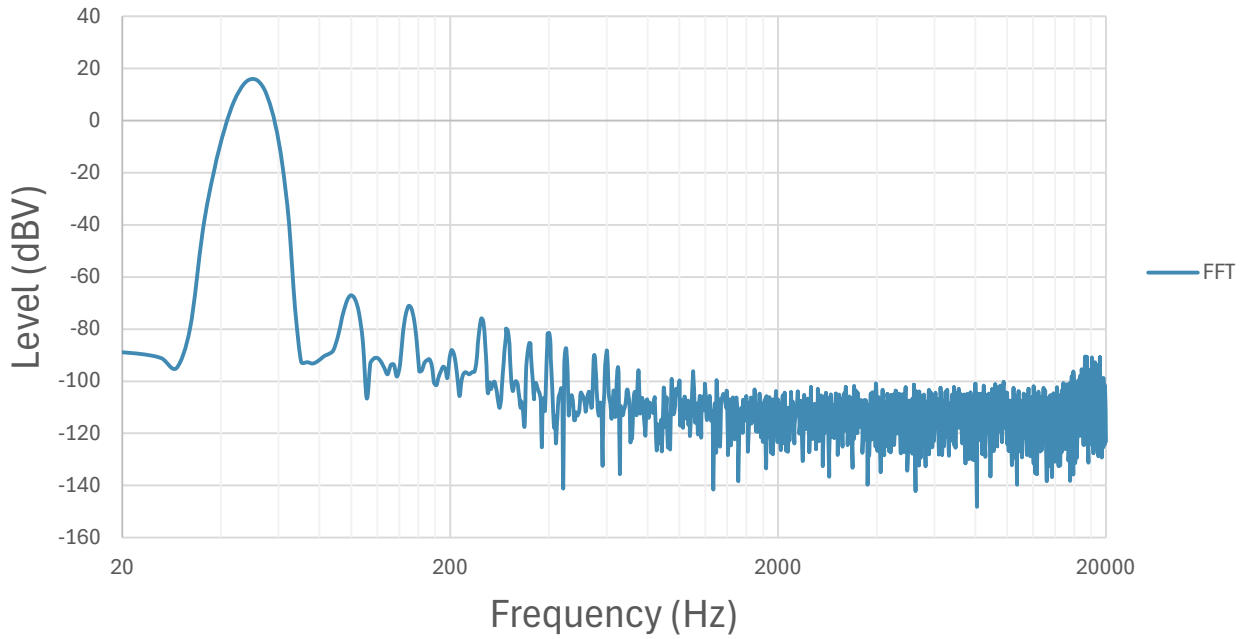


### Power Bandwidth (4Ω) @14.4VDC



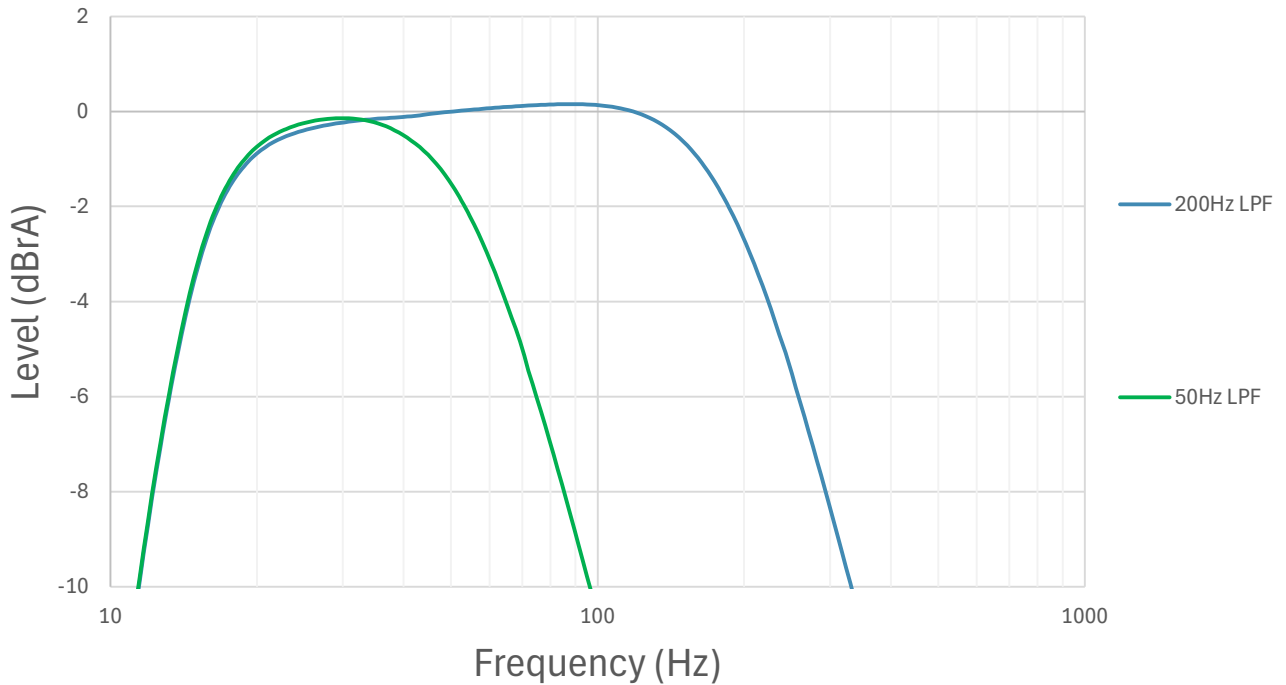
# FFT

## FFT (50Hz Signal)



# Crossover Frequency Response

## Crossover Frequency Response



KickEQ™

